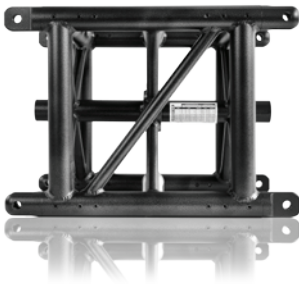


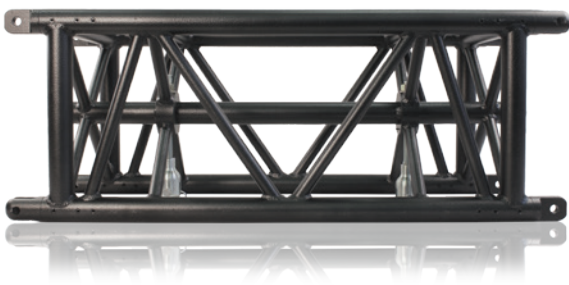
xVision Channel Truss Rigging System

One of the keys to building a seamless LED display is the way it's supported. The ideal display support structure has a low deflection rate, assembles quickly and ensures a safe installation. Our custom-designed box truss does all three - incorporating innovative timesaving features that make it the perfect companion to any touring LED video package.

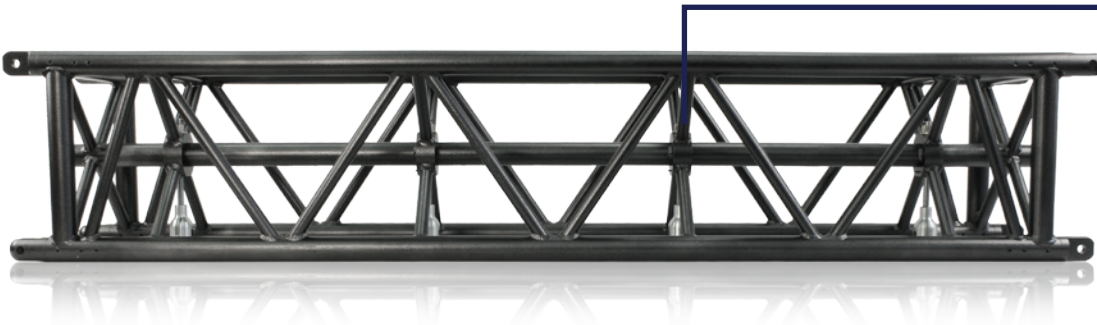
One Tile wide



Two Tiles wide



Four Tiles wide



Fast and efficient

By using a clever system with built-in adjustable rigging points, the xVision Channel Truss eliminates the need for extra span sets, shackles, steel slings and turnbuckles, all of which eats up usable height and installation time. The adjustment mechanism allows for precise alignment of the LED display by tweaking the vertical position of each bumper, which can also ride inside the truss for an even quicker installation time.

Safe

All our trusses and accessories are manufactured in North America using only the most stringent design and build specifications, and assembled by certified welders. All rigging components are stress-tested in a state of the art engineering facility and certified with strict industry regulations to meet or exceed widely-accepted safety factors.

Clean look

By removing all unnecessary extra hardware, ourTruss cleans up your installation and creates a highly professional appearance, never possible before by using traditional display hanging methods. Plus, the high number of cross braces makes cable management easy, with virtually no need to electrical tape or tie lines.

Ordering for Channel Trusses :

XVT-CT-1616-0512-BK
(1 tile wide)

XVT-CT-1616-1024-BK
(2 tiles wide)

XVT-CT-1616-2048-BK
(4 tiles wide)

Dimensions Weight

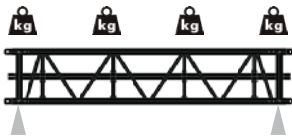
512 mm
34 lbs [15,4 kg]

1024 mm
52 lbs [23,6 kg]

2048 mm
87 lbs [39,5 kg]

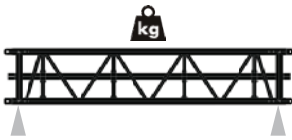
Load Capacity

Uniformly distributed load



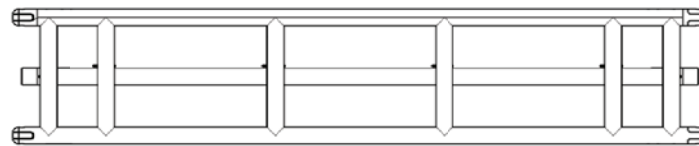
Span		Load				Deflection	
pi.	(m)	lb / hook	(kg / hook)	(lbs) (max total)	(kg) (max total)	in	(mm)
6.72	(2.05)	1850	(839.0)	7400	(3356)	0.15	(3.8)
13.44	(4.10)	875	(396,8)	7000	(3175)	0.51	(13.0)
20.16	(6.15)	460	(208.6)	5250	(2381)	1.24	(31.5)
26.88	(8.20)	260	(117.9)	4160	(1887)	1.86	(47.2)
33.60	(10.24)	160	(72.6)	3200	(1451)	2.61	(66.3)
40.31	(12.29)	110	(49.9)	2640	(1197)	2.97	(75.4)

Concentrated load

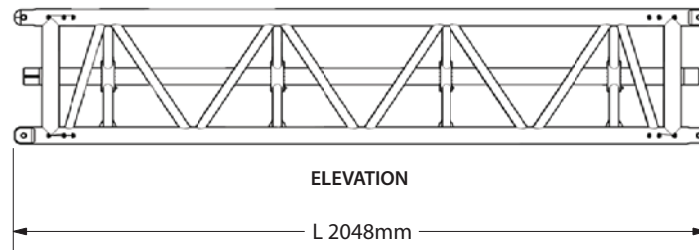
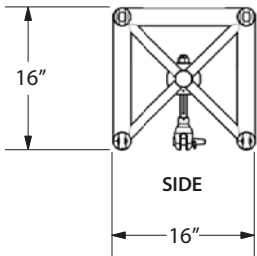


Span		Load				Deflection	
pi.	(m)	lb / hook	(kg / hook)	(lbs) (max total)	(kg) (max total)	in	(mm)
6.72	(2.05)	1850	(839)	7400	(3356)	0.15	(3.8)
13.44	(4.10)	875	(397)	3500	(1587)	0.44	(11.2)
20.16	(6.15)	690	(313)	2760	(1252)	1.13	(28.7)
26.88	(8.20)	520	(236)	2080	(943)	1.7	(43.2)
33.60	(10.24)	405	(184)	1620	(735)	2.54	(64.5)
40.31	(12.29)	330	(150)	1320	(599)	2.79	(70.9)

Main chords: 1.9" OD x 0.200"
Diagonals: 1.0" OD x 0.125"



PLAN



**BEST DEBUTING
RIGGING PRODUCT**